

# Pacesetter AC Motor Speed Control

MODEL 2998 NEMA-1 / IP-40

**INNOVATIVE SOLUTIONS**

The Bodine Electric model 2998 3-phase AC motor speed control is designed to drive 230 VAC, 50 or 60 Hz, inverter-duty, 3-phase gearmotors and motors ranging from 1/8 HP to 1 HP (746 watts). It operates from a single-phase, 115 or 230 VAC line, and is housed in a NEMA-1 / IP-40 rated enclosure for basic environmental protection. The control is designed for applications such as conveyors, packaging equipment, door and gate openers and other industrial equipment.

- **Simple to Operate:** does not require programming. Uses trimpots and jumpers, which are factory set for most applications
- **Motor Horsepower Selection Jumper:** allows the drive to be used on a wide range of motor HP
- **Diagnostic LEDs:** PC board mounted LEDs for power on, drive status, and overload
- **Run/Fault Relay Output Contacts:** turns on or off equipment. Signals stop mode or if a fault has occurred
- **Barrier Terminal Blocks:** facilitates wiring
- **Jumper Selection of Drive Output Frequency:** increases the motor speed up to two times the rated RPM
- **Motor Overload (I<sup>2</sup>t) with RMS Current Limit** prevents motor burnout and nuisance trips
- **Electronic Inrush Current Limit:** eliminates harmful inrush AC line current during startup
- **Short Circuit:** shuts down the drive if a short circuit occurs at the motor (phase-to-phase)
- **Regeneration:** eliminates tripping due to bus overvoltage
- **Overvoltage and Undervoltage:** shuts down the drive if the AC line input voltage goes above or below the operating range
- **On/Off Switch, Speed Pot, F-S-R Switch**
- **Built-in Line Filter:** for CE compliance
- **Input transient suppression**



## Electrical Ratings

AC Line Input				Output		
(VAC)	Phase	Max. Current (Amps AC)	Fuse (Amps)	Voltage Range (Amps)	Max. Current <sup>1</sup> (RMS Amps/Phase)	Max HP
115	1	16	20	0-230	3.6	1
208/230	1	10	15	0-230	3.6	1

NOTE: 1. Dependent on motor performance.

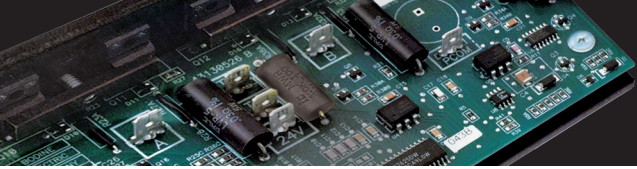
## General Performance Specifications

Description	Specifications	Factory Setting
115 VAC Line Input Voltage Operating Range (VAC) <sup>1</sup>	115±15%	—
208/230 VAC Line Input Voltage Operating Range (VAC)	208 (-15%) / 230 (+15%) <sup>2</sup>	—
Horsepower Selection (HP) (J2)	1/8, 1/4, 1/2, 3/4, 1	1
Acceleration Time (Seconds)	0.3-20	1.5
Deceleration Time (Seconds)	0.3-20	1.5
Output Frequency Multiplier (1X, 2X) (Jumper J4) <sup>3</sup>	1, 2	1.0
Speed Reg. (30:1 Speed range, 0-full load; % base speed) <sup>4</sup>	2.5	—
Overload Protector Trip Time for Stalled Motors (Sec.)	6	—
Run/Fault Relay Output Contact Rating (Amps @ 30V DC, 125 V, 250 VAC)	1, 0.5, 0.25	—
Operating Temperature Range (°C)	0-45	—

1. Do not operate the drive outside the specified AC line input voltage operating range.
2. The drive is factory set for 208/230 Volt AC line input (Jumper J1 not installed). For 115 Volt AC line input, install Jumper J1.
3. Allows the motor to operate up to two times the rated RPM. Constant motor horsepower will result when operating the drive in the "2X" mode above the motor nameplate rated RPM.
4. Dependent on motor performance.



[www.bodine-electric.com](http://www.bodine-electric.com)  
for our complete line of AC inverter duty gearmotors, motors and controls



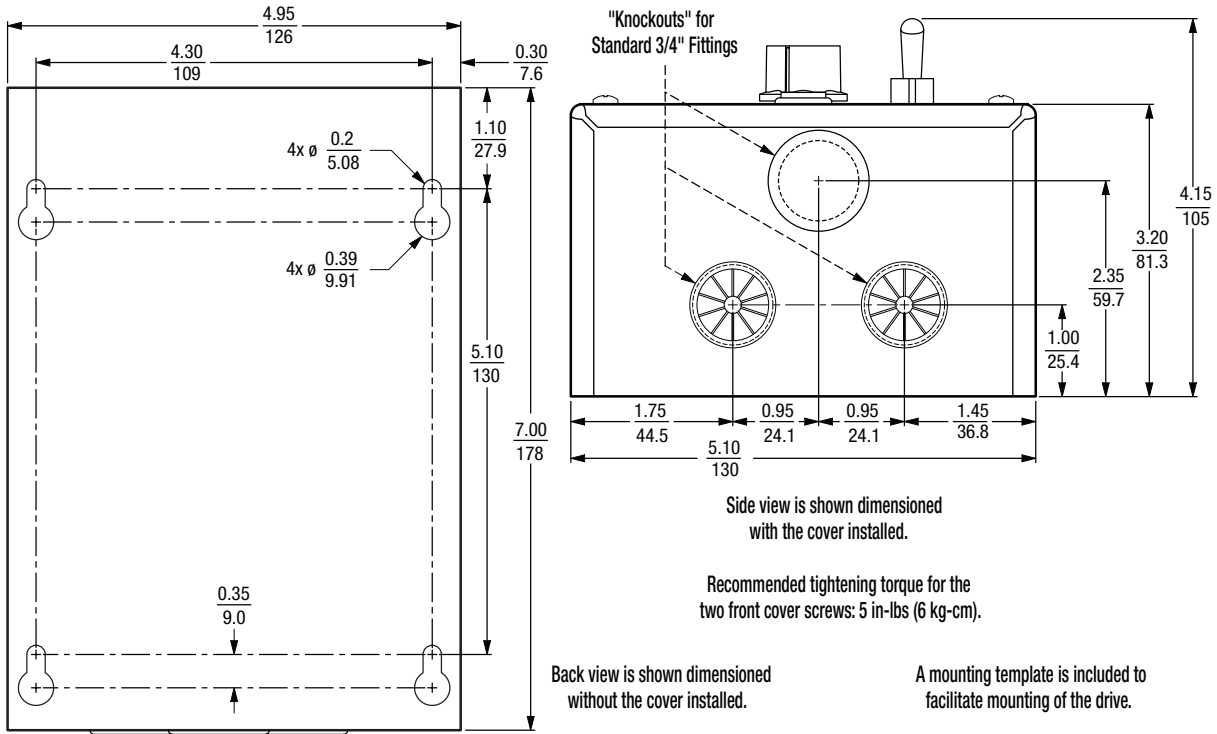
# Pacesetter AC Motor Speed Control

## MODEL 2998 NEMA-1 / IP-40



### Dimensions

Weight: 2.4 lbs.



### Control Layout

